

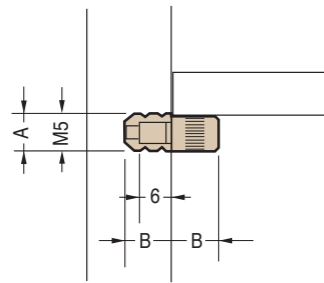
## 211-213



## 212-214



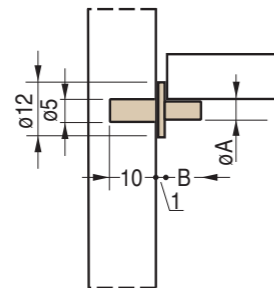
	Ottone Brass Laton	Ottone nichelato Nickel-plated brass Laton niquelado	Ottone bronzato Bronze-plated brass Laton bronceado	
	Cod.	Cod.	Cod.	
211 mm A=7 mm B=9	RE000211OTT00	RE000211ONI00	RE000211OBR00	1000
213 mm A=7 mm B=9	RE000213OTT00	RE000213ONI00	RE000213OBR00	1000
212 mm A=7 mm B=9	RE000212OTT00	RE000212ONI00	RE000212OBR00	1000
214 mm A=8 mm B=10	RE000214OTT00	RE000214ONI00	RE000214OBR00	1000



## 200-300



	Acciaio zincocromato Zinc chromium-plated steel Acero zincocromado	Acciaio bronzato Bronze-plated steel Acero bronceado	
	Cod.	Cod.	
200 $\varnothing$ mm A=4 $\varnothing$ mm B=8	RE000200AZC00	RE000200ABR00	1000
300 $\varnothing$ mm A=5 $\varnothing$ mm B=10	RE000300AZC00	RE000300ABR00	1000



## 631



	Acciaio zincocromato Zinc chromium-plated steel Acero zincocromado	
	Cod.	
631 mm A=64	RE00063100000	1000
632 mm A=96	RE00063200000	1000
633 mm A=128	RE00063300000	1000
634 mm A=160	RE00063400000	500
635 mm A=192	RE00063500000	500
636 mm A=224	RE00063600000	500
637 mm A=256	RE00063700000	500
638 mm A=288	RE00063800000	500
639 mm A=320	RE00063900000	500
640 mm A=352	RE00064000000	500
641 mm A=384	RE00064100000	500
642 mm A=416	RE00064200000	500

