

2000

mm. $\phi 25 \times 14$

Cod.

CI002000BIA00

CI002000MAR00

CI002000NER00

Ottone

nichelato nylon bianco

bronzato nylon marrone

brunito nylon nero

Brass

nickel-plated white nylon

bronze-plated brown nylon

burnished-plated black nylon

Laton

niquelado nylon blanco

bronceado nylon marron

bruñido nylon negro



180°

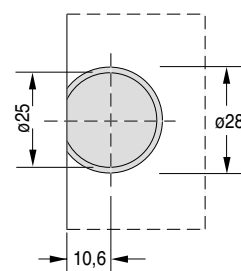
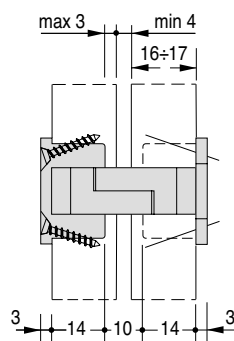
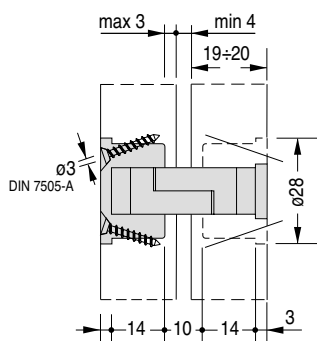
50

180°

50

180°

50



2001

mm. $\phi 25 \times 17$

Cod.

CI002001BIA00

CI002001MAR00

CI002001NER00

Ottone

nichelato nylon bianco

bronzato nylon marrone

brunito nylon nero

Brass

nickel-plated white nylon

bronze-plated brown nylon

burnished-plated black nylon

Laton

niquelado nylon blanco

bronceado nylon marron

bruñido nylon negro



180°

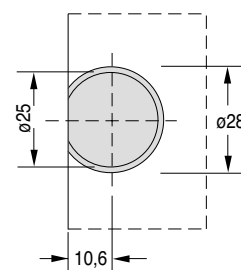
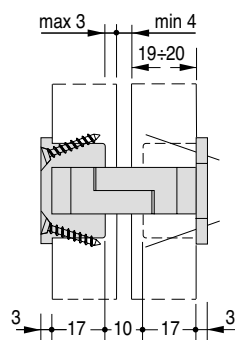
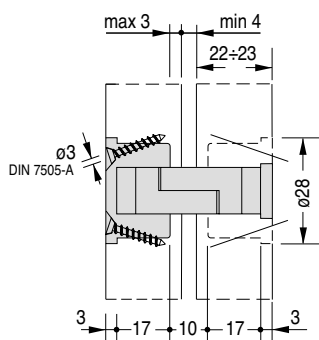
50

180°

50

180°

50



Si possono usare legni con spessori intermedi incassando parzialmente la corona di testa.

Woods with intermediate thickness can be used embedding partly the upper protrusion/part.

Se pueden usar paneles de grosores intermedios, encajando parcialmente la corona de cabeza.